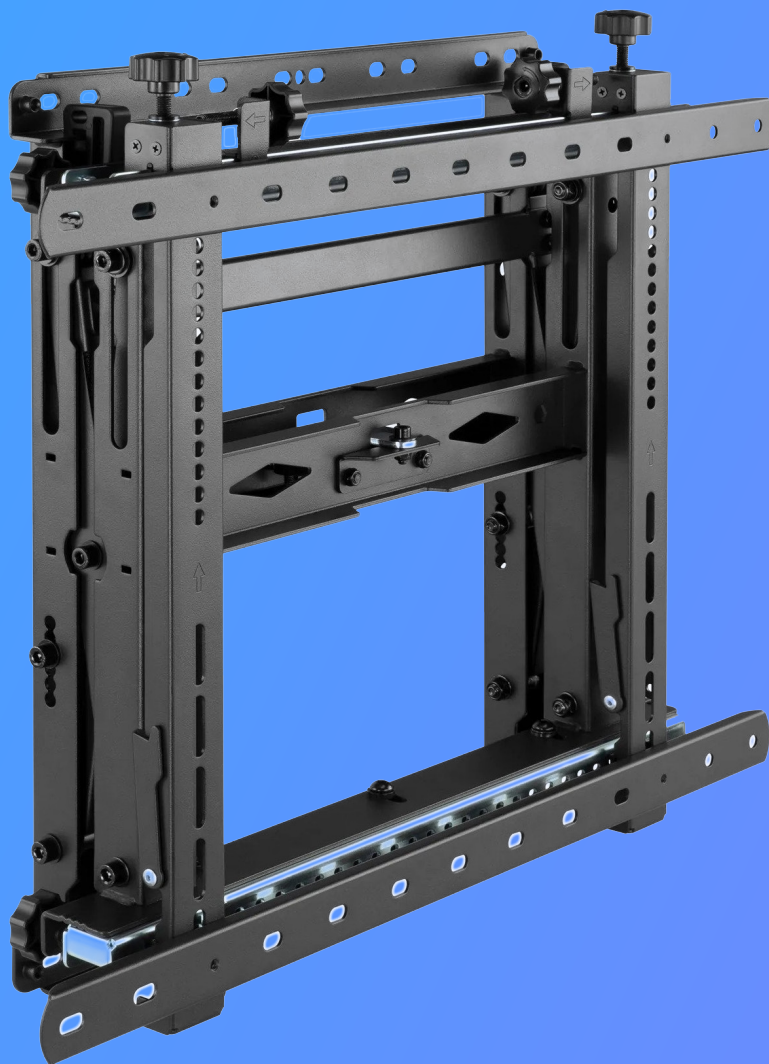


Video Wall mounting system

Wall mount support for Video Wall with quick release

Easy to set up, quick to install and super easy to maintain!

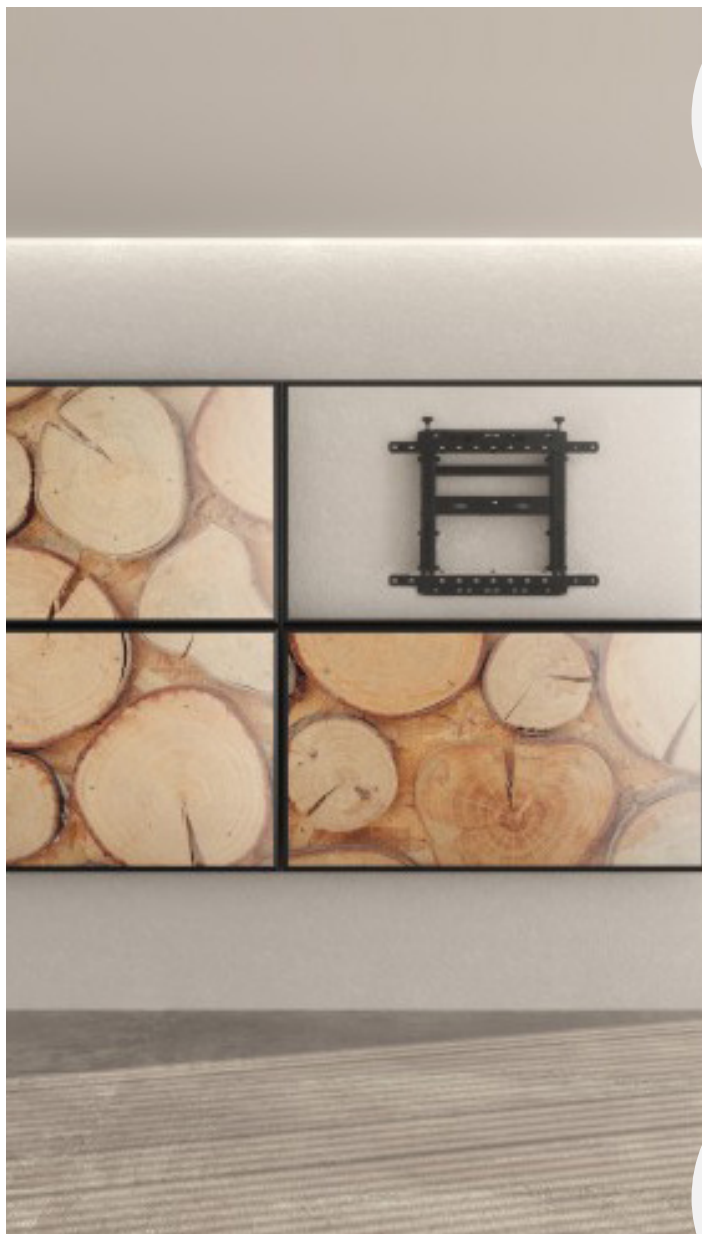
Compatible with **DABLIU** Video Wall.



Sturdy and feature-rich Video Wall Mount

Quick installation, no measuring needed and easy access to the display

The Wacebo Video Wall Mount is **quick to install**, and **easy to set up and maintain** thanks to its **robust and feature-rich** design, which saves installation time. You'll be able to make **micro-adjustments without tools** and have **easy access to the display** for quick maintenance. Installation doesn't require any measurements, reducing installation errors and inaccuracies to a minimum !



Innovative
Quick-Release

Easy & quick
installation



Effortless micro-
adjustments

Perfect display
alignment system



Anti-theft
system design

Design with rear
space for anti-
theft padlock
insertion



Modular system

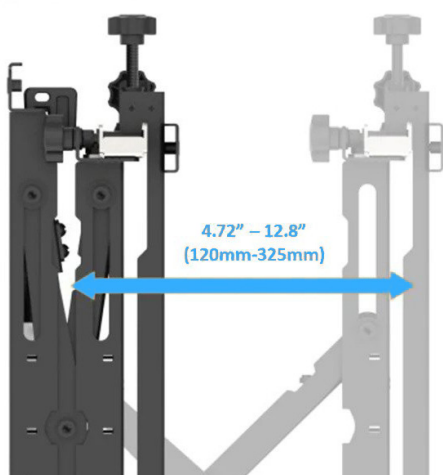
Ability to add or
remove display
modules at any
moment

Vertical or horizontal orientation for different viewing experiences

Convenient, safe & sturdy, the right stand for every need

Push to open and close

System that facilitates the opening and closing of the display



Display rotation

Thanks to the knobs that can be turned in opposite directions



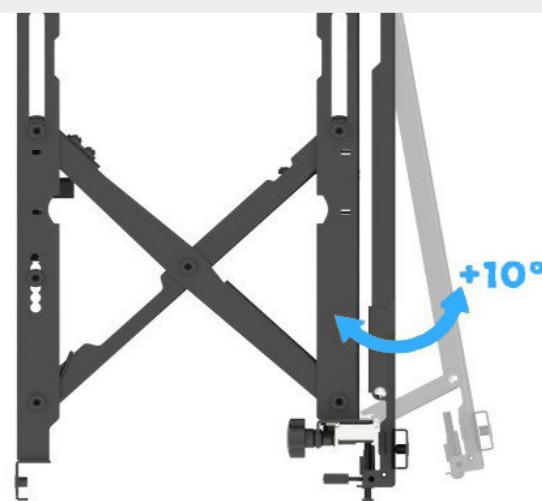
Spacing of the display

Turn the two knobs in the same direction



Easels

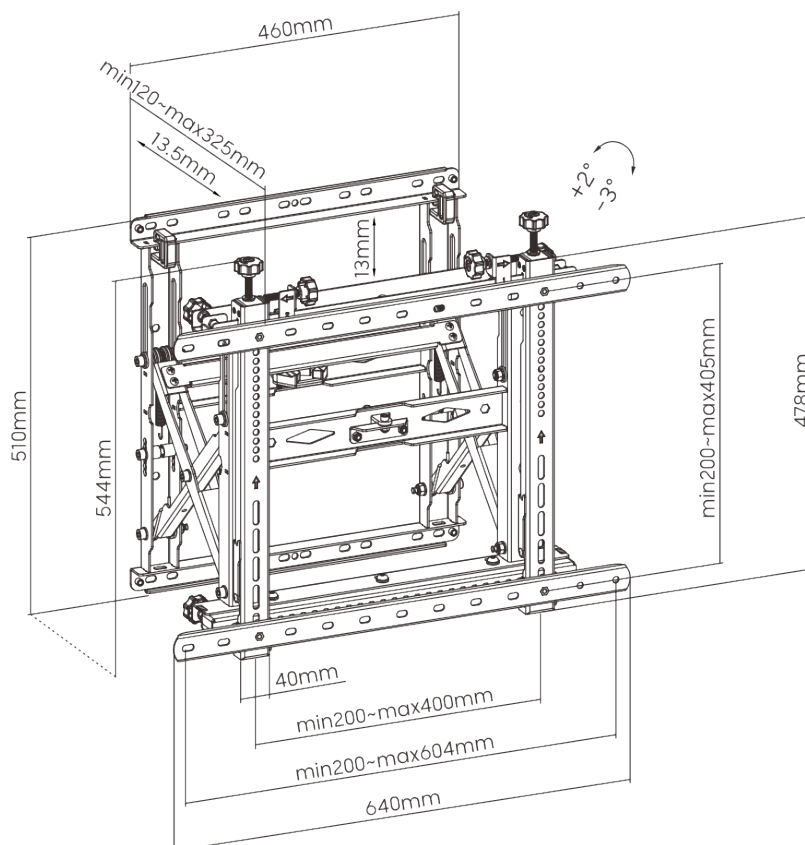
Tilt the display up to 10° for convenient maintenance



Video Wall mounting system

Specifiche tecniche :

Material	Steel, plastic
Surface finishing	Powder coating
Color	Black
Dimensions	640×120~325×544mm (25.2"×4.7"~12.8"×21.4")
Supported dimensions	45"-70"
VESA Compatibility	200×200,300×200,400×200,300×300,400×300,400×400,600×400
MAX mounting hole	604×405
Weight capacity (per screen)	70kg (154lbs)
Profile size	120~325mm (4.7"~12.8")
Adjustment (depth/height)	13.5mm/13mm (0.53"/0.51")
Tilt range	+2°~-3°
Installation	Installation on sturdy masonry





Viale Gianluigi Bonelli, 40 | 00127 Rome (RM) | ITALY

Tel. (+39) 06.98383431 | Fax (+39) 06.98383432

commerciale@waceboeurope.com | www.waceboeurope.com