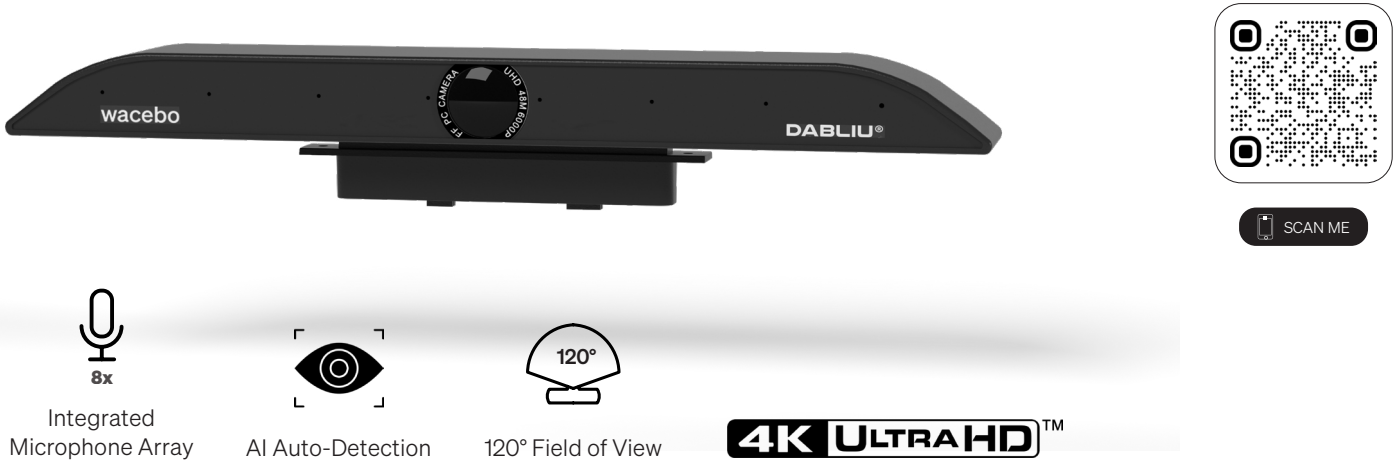


V12 Plus - UHD 48M Camera



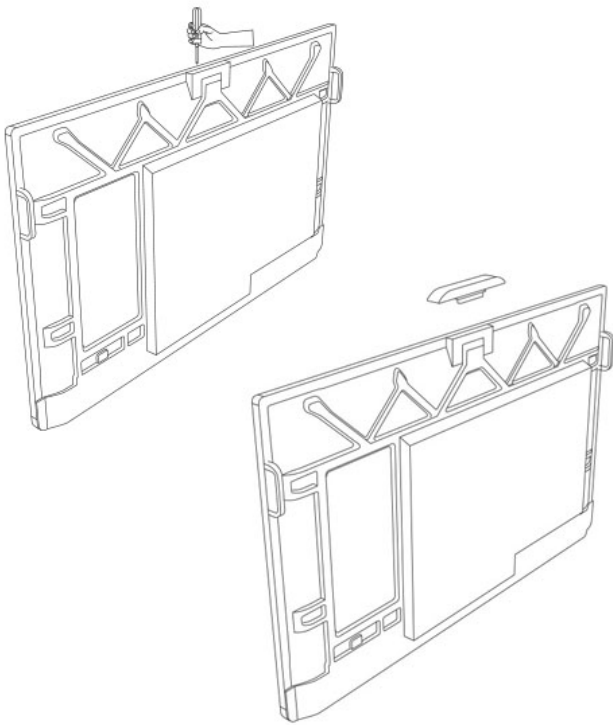
Video conferencing system with 120° wide angle and 4K optics

Display	
Image Sensor	1/2 High quality 48M CMOS sensor
Effective Pixels	Output pixels 48 megapixels (8000*6000P@5fps), 3840*2160P@30fps
Video Output Ports	1 USB 2.0 port: type-c port; supports audio signal output
Audio Input	Built-in 8 digital MIC pickups
Video Signal	Main stream: 8000*6000@5fps/3840×2160@30fps/1920×1080@30fps/30fps, 1280×720@30fps and many other formats
Video Compression Formats	YUY2/MJPG/H.2.64
Focus	F(EFL)=3.94±5%mm F(BFL)=1.53 0.2mm F(FBL)=1.28 0.2mm
Iris	F/NO=2.2±5%
Electronic Variable	4k
Low Illumination	0.5LUX F2.2,AGC ON
Digital Noise Reduction	3D Digital Noise Reduction
Low Illumination Mode	on/OFF
White Balance	Auto/manual/one button focus
Spotlights	Auto
Exposure	Auto
Backlight Compensation	Auto

V12 Plus - UHD 48M Camera

Intelligent zoom	On/Off
Dual Stream	On/Off
Signal-to-noise Ratio	≥ 55dB
Voice Tracking	Supported
Auto Framing	Supported
Mode	AI Smart Focus Switch
Audio input	Built-in 8 digital microphones with an 8-meter sound pickup range
MIC sampling frequency	16KHZ 16bit
MIC sensitivity	-3bdB
Frequency Response	80Hz-8KHz
Dynamic range	60Hz-20KHz
Audio in	Echo cancellation port: built-in data cable
USB	Type-C port
Supported Operating Systems	Supports Windows 7 (1080p and below), Windows 8.1/10, macOS™ 10.10+, Linux (UVC required), Android, and iOS
Video Compression Formats	YUY2±MJPEG
USB Audio	Supported
USB Communication Protocol	UVC±UAC
EPTZ Control	EPTZ supported
Hardware Requirements	2.8GHz Intel@ Core I7Duo processor or higher, 8GB RAM or higher
Operating voltage	5V (via USB 2.0)
Power Consumption	Voltage 5V
Energy consumption	Voltage: 5V; Electric Current ≤700Ma (max)
Operating Environment Temperature	-30°C - +60°C
Storage Environment Temperature	20°C-75°C
Operating Temperature	-20°C - +45°C
Operating Humidity	20% - 80%
Dimension (L × P × A)	292mm x 41mm x 33mm
Weight	450g

Technical drawings



Connection Method

1. Unscrew and remove the upper cover of the monitor. Secure the camera base on the top side of the monitor.
2. Connect the two cables from the camera base to the pre-assembled cables inside the monitor.
3. Attach the camera to the magnetic base - installation is complete.

2. Accessory List

